

**WORLD'S LARGEST MANUFACTURER  
OF TURBIDITY BARRIERS**

Manufactured By Aer-Flo • Sold Only Through the Best Distributors

# WORLD-CLASS BARRIER SOLUTIONS

As the world's largest manufacturer of turbidity barriers and curtains, Aer-Flo products are sold through a network of industry-leading environmental and construction distributors. Our products **meet or exceed all DOT specifications** as well as being designed and produced in the U.S.

Founded in 1981 to produce tarps and covers for Florida's trucking and agriculture industries, Aer-Flo, Inc. has grown steadily by entering new markets with high-quality products.

In 1990 the company began manufacturing for the construction/environmental industries with its **Tough Guy® Turbidity Barriers**, an erosion and sediment containment product. Tough Guy® barriers utilize industry-leading materials to provide the best solutions across a variety of industries. Customers rave about our Tough Guy® line which is widely recognized as the go-to brand. And like all Aer-Flo products, Tough Guy® barriers are designed and manufactured in the United States.

## Our product line includes:

- Floating turbidity barriers
- Weed-debris booms
- Staked barriers
- Barrier Accessories
  - > Lighted navigation buoys
  - > Anchored kits
  - > Towing bridle

Aer-Flo Environmental prides itself on innovative custom solutions with exceptional customer service and response times. We offer the industry's fastest lead times and carry the **largest supply of in-stock barrier inventory** built with only the highest product quality available.



**“What’s one of the best things about working with the Aer-Flo team? There are many. They have products in stock. I always get a response when I need help or have questions. And when they say they’ll get something done, they do.”**

**— Florida Distributor**

# FLOATING TURBIDITY BARRIERS

## The Ideal Solution For Sediment Control

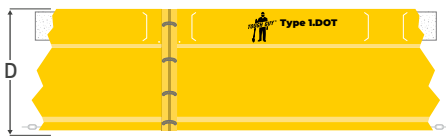
These barriers consist of a top flotation boom, an impervious fabric curtain extending downward underwater, and a heavy galvanized steel chain sealed into a hem along the entire bottom of the curtain to provide ballast to keep the curtain vertical in the water. End hems are sealed around a rope and grommeted to allow attachment to each other with rope or bolt/nuts/washers.

Floating turbidity barriers installed in moving water, tidal areas, and windy areas must be anchored to stay in position. Aer-Flo has developed a revolutionary system to ensure barriers are effectively anchored to stay in position. Our unique positioning/retrieval buoy is used to pull the barrier to proper position during installation, and to unhook the anchor from bottom during removal. Our floating turbidity **barriers meet or exceed all DOT specifications** and are second to none in quality, effectiveness and strength as they utilize our **Tough Guy® technology**.

**There are three major design types of Floating Turbidity Barriers:** Type1.dot, Type2.dot and Type3.dot — and all meet or exceed all known federal and state governmental specifications, including NPDES Phase II requirements.



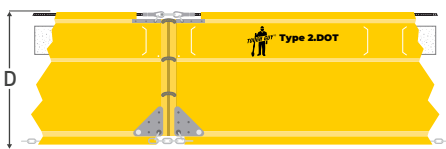
### Type 1.DOT



This is the most frequently specified barrier in the TOUGH GUY® barrier line. It is recommended for construction sites located in protected areas that are exposed only to light winds and to current velocities of less than one foot per second. This type of site may include ponds, shallow lakes, small streams and marshes.

Anchorage consisting of stakes or concrete blocks may be required to maintain the barrier in its required position. Barrier sections are connected by rope lacing or nylon ties which should be purchased from your local distributor.

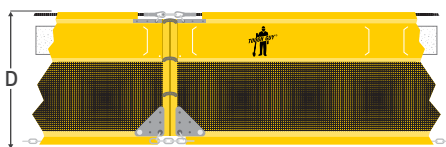
### Type 2.DOT



This is the workhorse of the TOUGH GUY® barrier line. Comes supplied with a top load cable and special stress plates for reinforcing the corners and is designed to handle more severe conditions. It is recommended for lakes, streams, inter-coastal and tidal areas where current velocities up to five feet per second are expected.

The anchorage and installation must be designed to meet the site conditions. Contact Aer-Flo or a qualified engineer for assistance when extraordinary site conditions are encountered. Barrier sections are connected using furnished shackles and rope lacing or nylon ties which should be purchased from your local distributor.

### Type 3.DOT



This is a special adaptation of the Type 2 barrier. Approximately 20% or more of the area of the barrier skirt fabric is replaced with a polypropylene filter fabric conforming to some State DOT specifications. The filter fabric is inserted to reduce the pressure on the curtain while retaining silt.

**Learn more on our website about optional barrier connectors:** ASTM Aluminum "Z" Connectors and Slotted PVC Tube Connector Seals

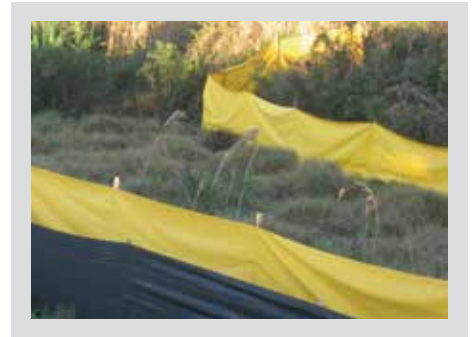
## STAKED BARRIERS

### Contain And Control Storm Water Runoff

Our line of staked barriers are continuous panels of impervious vinyl-polyester (PVC) fabric that, when installed correctly, contain storm water runoff or re-direct it to proper channels or retention areas.

These barriers are an ideal option for projects that have significant site discharge. Our barriers work to prevent erosion and storm water runoff in demanding conditions, and are DOT compliant for use as a storm water Best Management Practice (BMP). Our system works best in porous soils on moderately sloped sites.

**IDEAL FOR USE WITH:** Construction sites; Roadside ditches; Marshes, ponds, and other shallow bodies of water; Retention basins



## WEED-DEBRIS BOOMS

### Protect Waterways from Undesirable Marine Vegetation and Debris

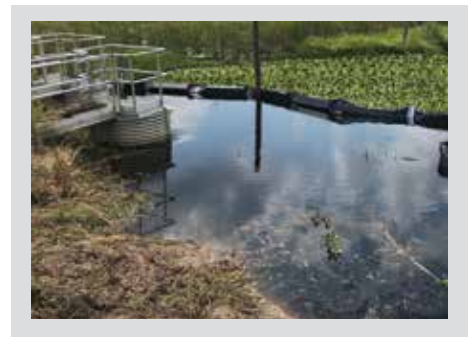
Keep waterfront areas clean and pristine with our weed and plant control booms help protect waterways from undesirable marine and aquatic plant vegetation and debris, while allowing the free flow of water.

Protect lakes, beaches, hotel, resort, and recreational waterfronts and shorelines from the invasive species that threaten these spaces with the most effective aquatic plant barrier solution on the market. Our versatile product can be used either seasonally or year-round.

We combine the latest technologies in floating booms and hydro-weed containment to help control the spread of invasive species and plants that spread by fragmentation.

**CONTROL THE SPREAD OF PLANTS SUCH AS:** Seaweed; Sargassum; Algae; Hydrilla; Hyacinth; Eurasian watermilfoil ... plus many other invasive species.

**IDEAL FOR USE AT:** Beaches; Parks with recreational shorelines; Hotels and resorts; Docks, ports, and marinas



## ACCESSORIES

### LIGHTED NAVIGATION BUOYS

Required by Coast Guard for floating turbidity barriers in navigable waterways.

### ANCHOR KITS

Includes everything needed to anchor Tough Guy® floating turbidity barriers.

### TOWING BRIDLE

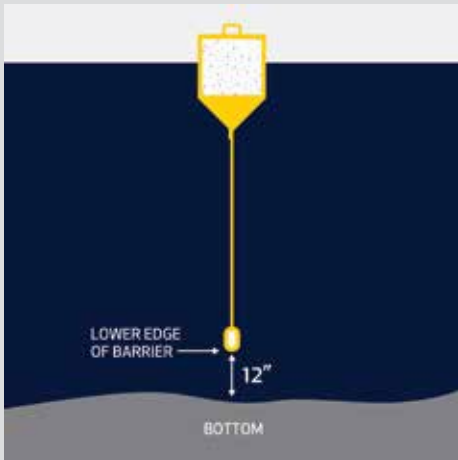
This accessory is designed to efficiently move flotation barriers through water during the installation process.



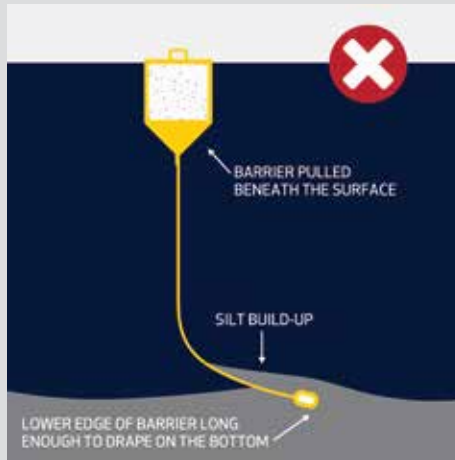
# BARRIER INSTALLATION

Floating turbidity barriers are effective in preventing silt and sediment migration into watercourses. However certain rules must be followed in order to make the installation successful. Visit [AerFloEnv.com](http://AerFloEnv.com) for more instructional details on our turbidity barrier installations.

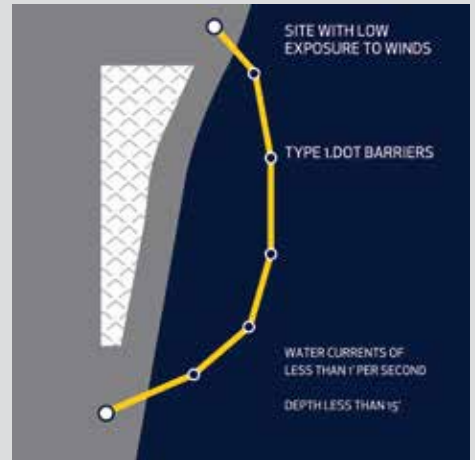
**BARRIER DEPTH: 12" OFF BOTTOM**



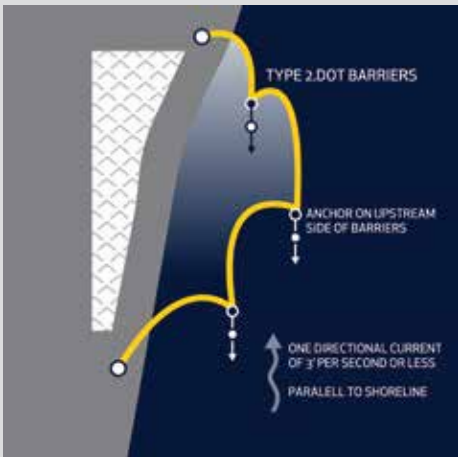
**IMPROPER INSTALLATION**



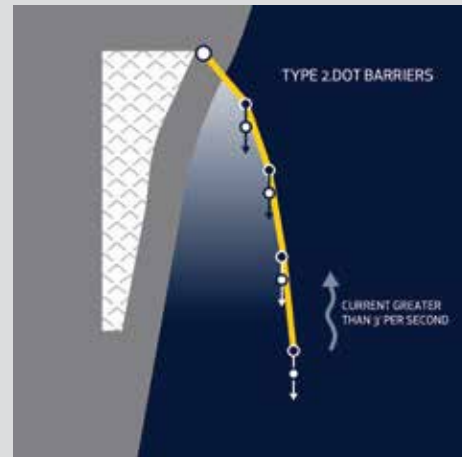
**TYPICAL TYPE 1.DOT BARRIER INSTALL**



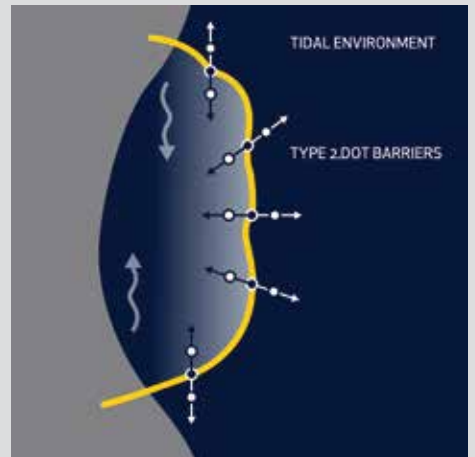
**TYPICAL TYPE 2.DOT BARRIER INSTALL**



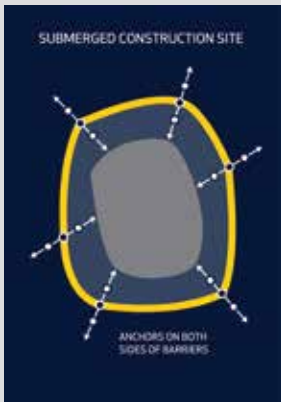
**TYPE 2.DOT BARRIER W/ GREATER CURRENT**



**TYPE 2.DOT BARRIER TIDAL INSTALL**



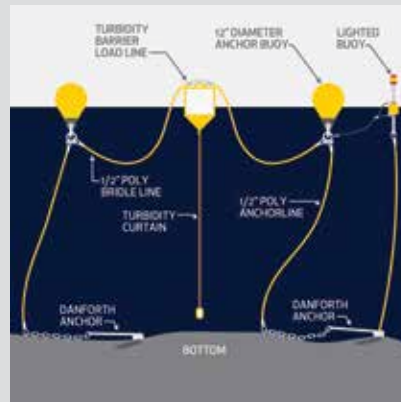
**CONSTRUCTION SITE**



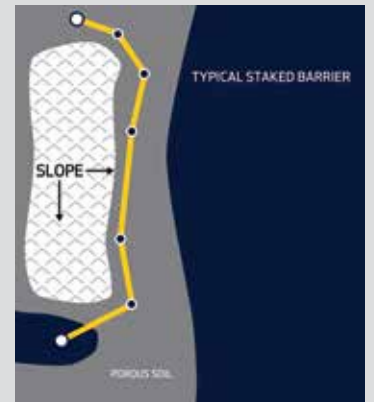
**IMPROPER INSTALLATION**



**TYPICAL ANCHORING SYSTEM**



**TYPICAL STAKED BARRIER**





For sales or technical assistance with your project:  
please contact your Authorized Distributor listed above, or call toll free: 833.818.1563